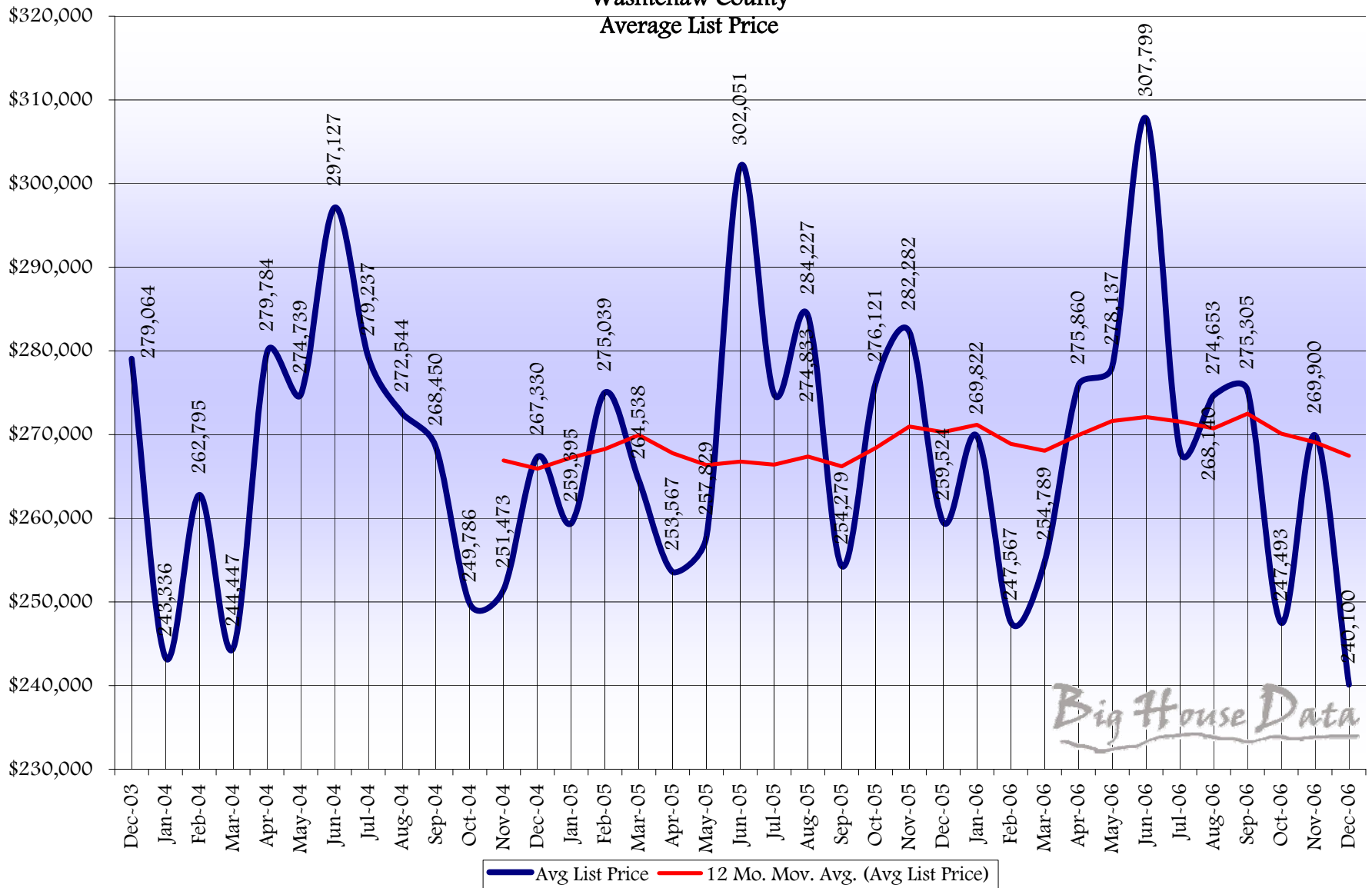
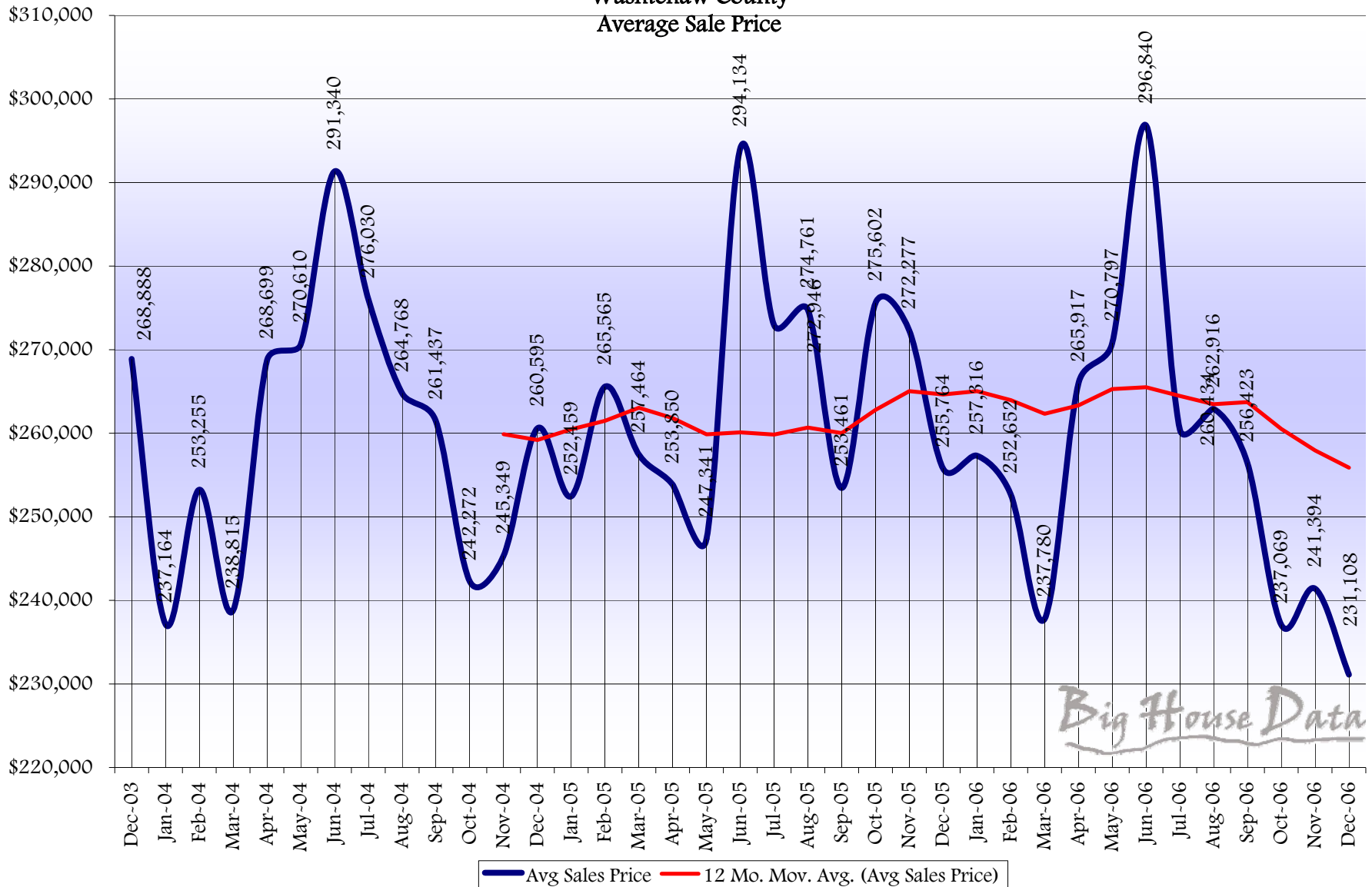


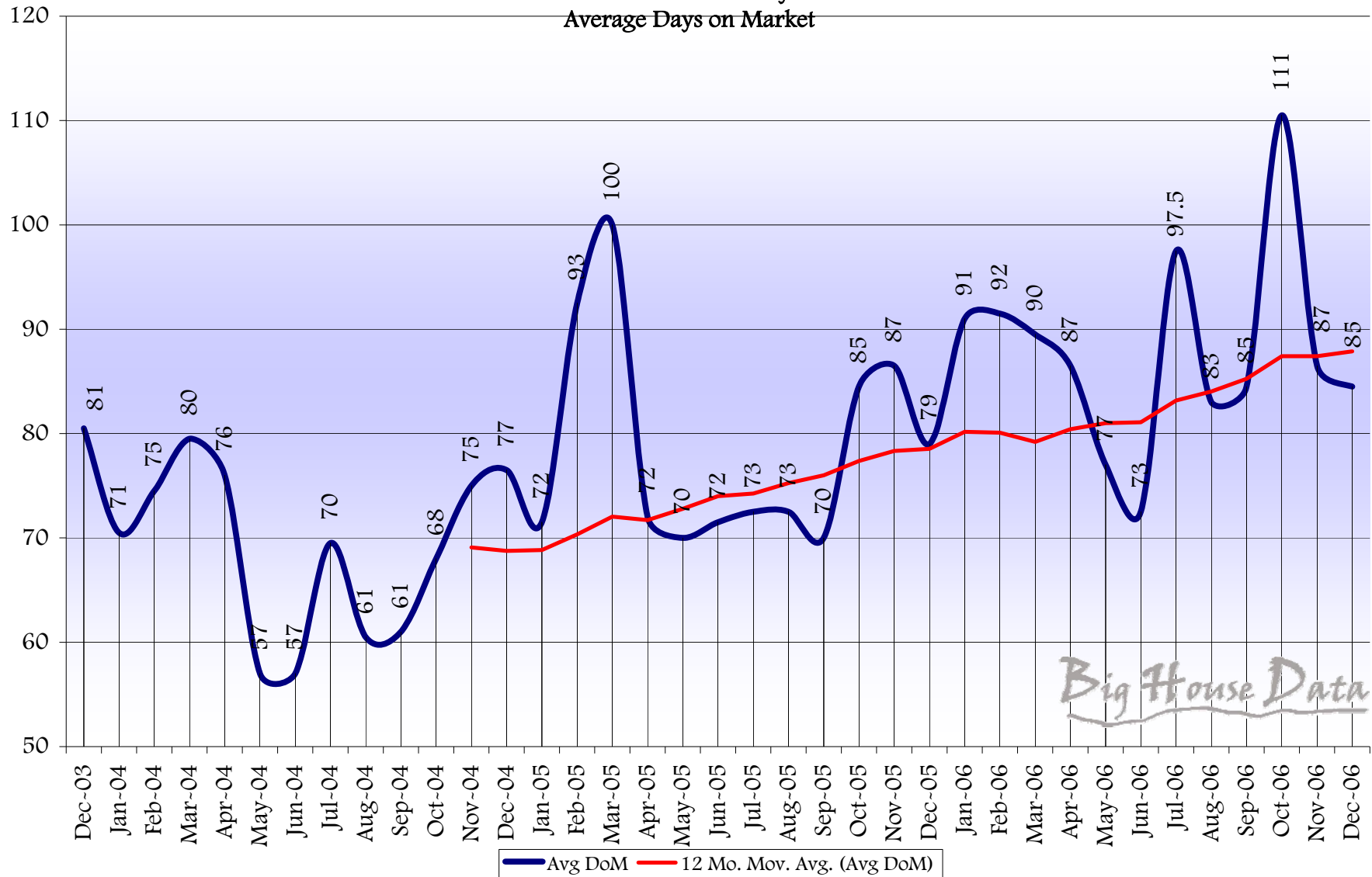
Washtenaw County Average List Price



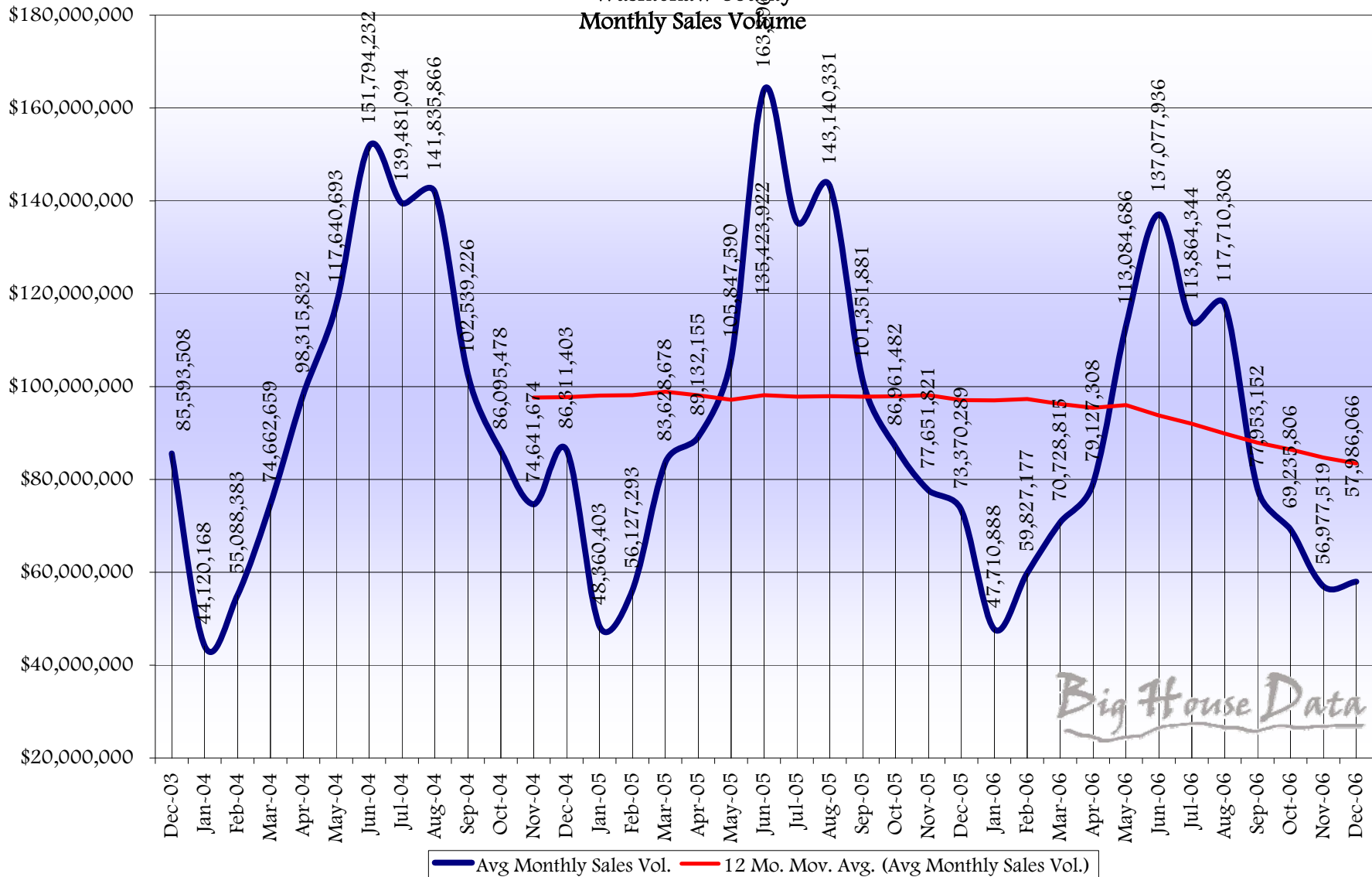
Washtenaw County Average Sale Price



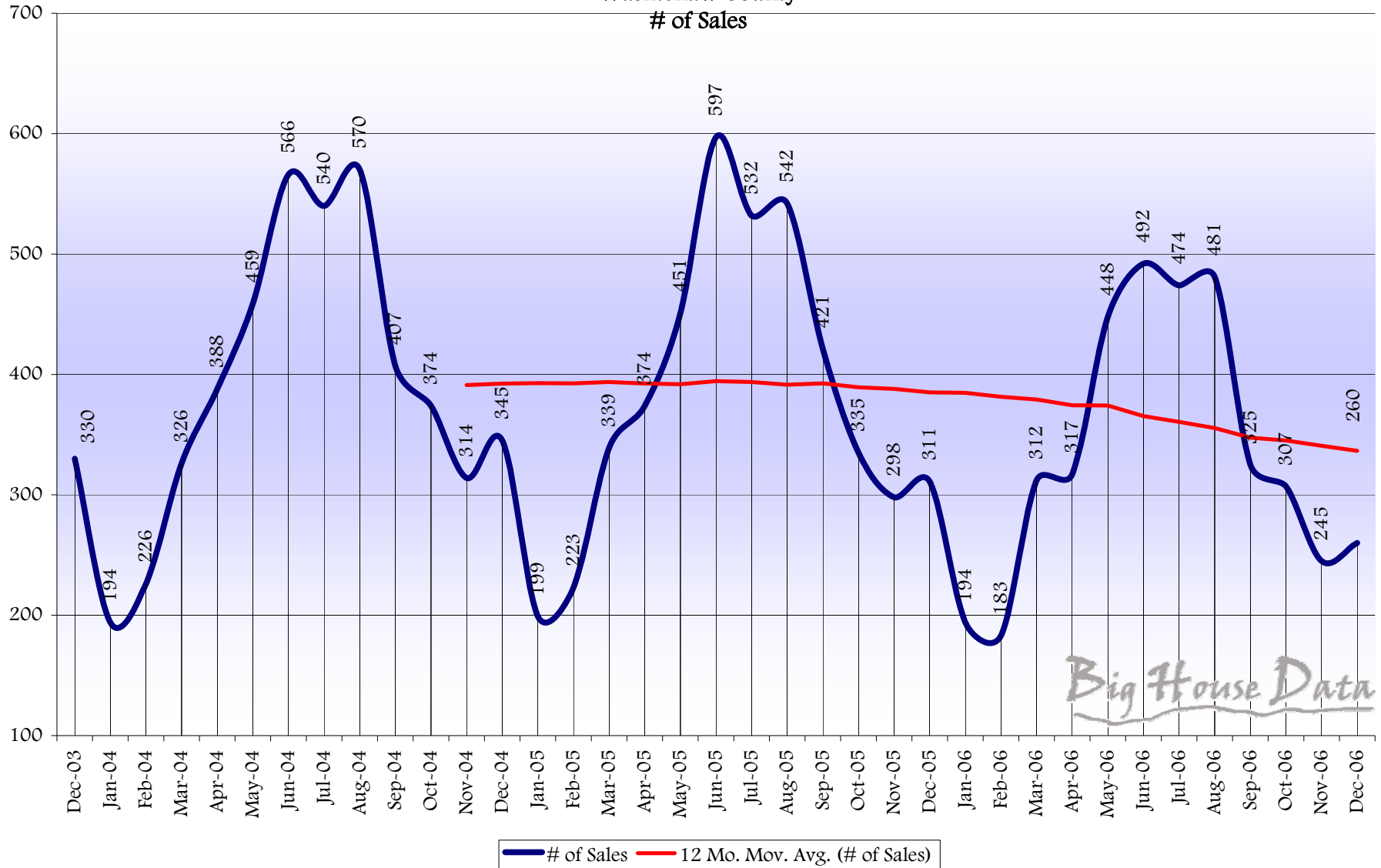
Washtenaw County Average Days on Market



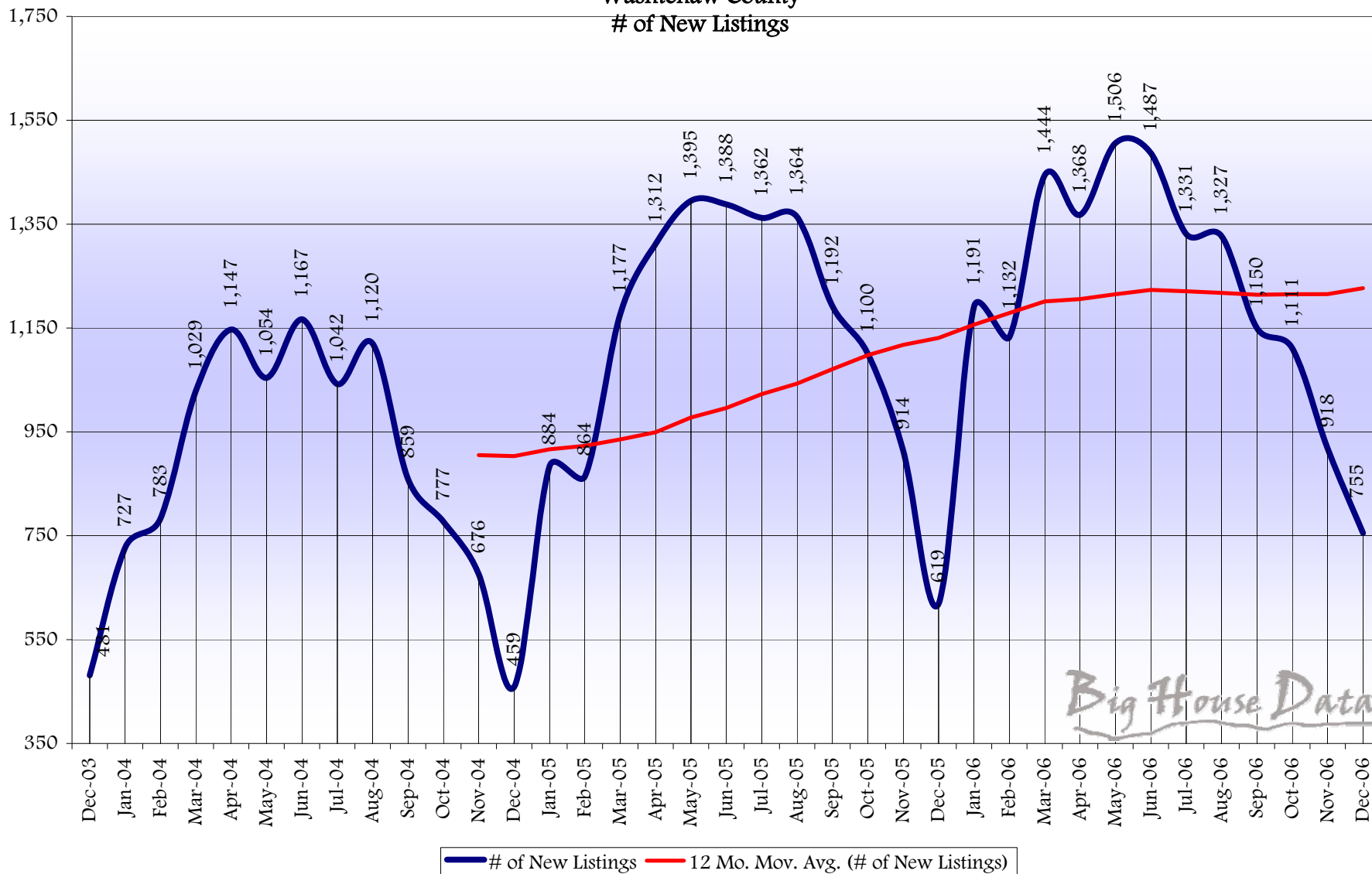
Washtenaw County Monthly Sales Volume



Washtenaw County # of Sales

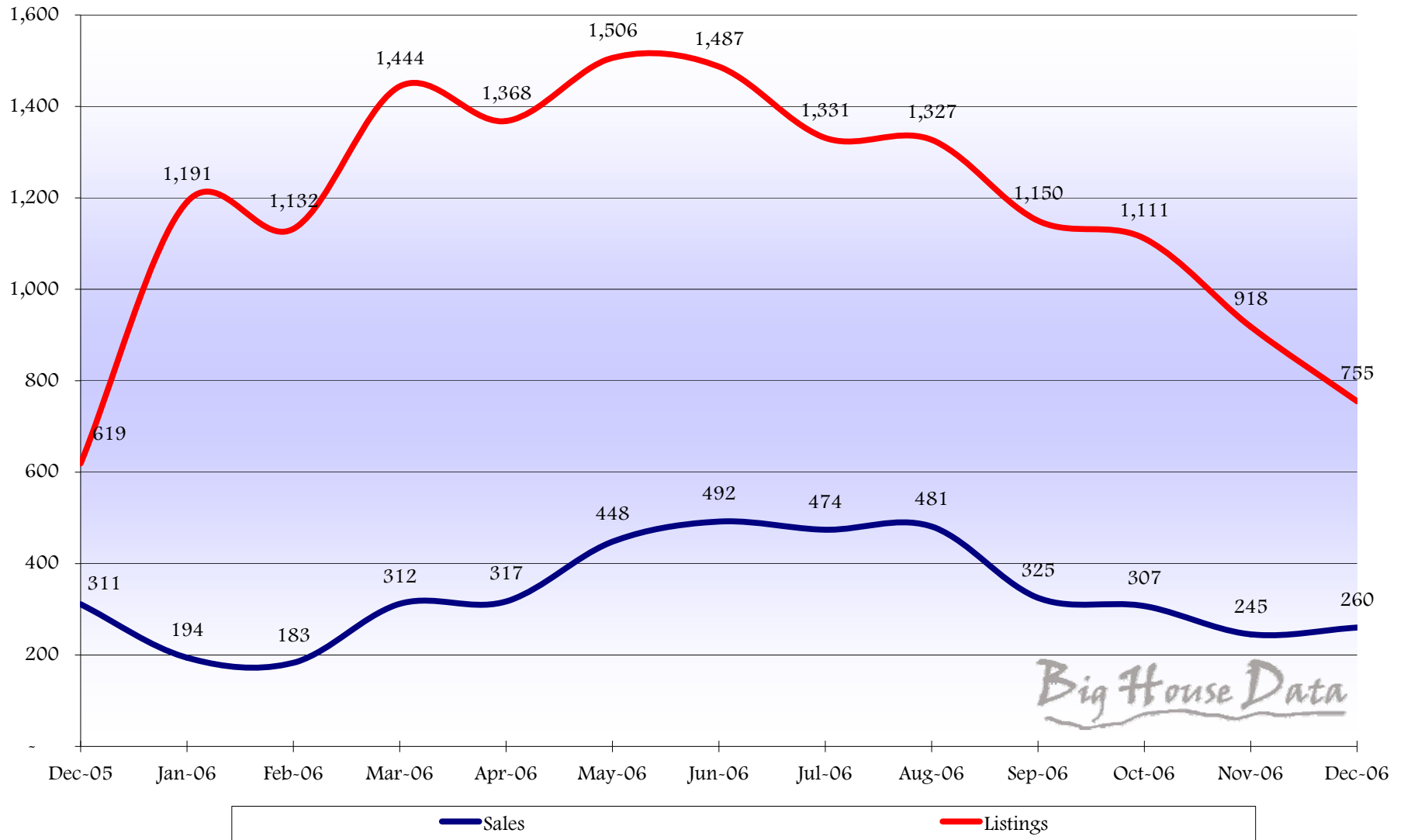


Washtenaw County # of New Listings

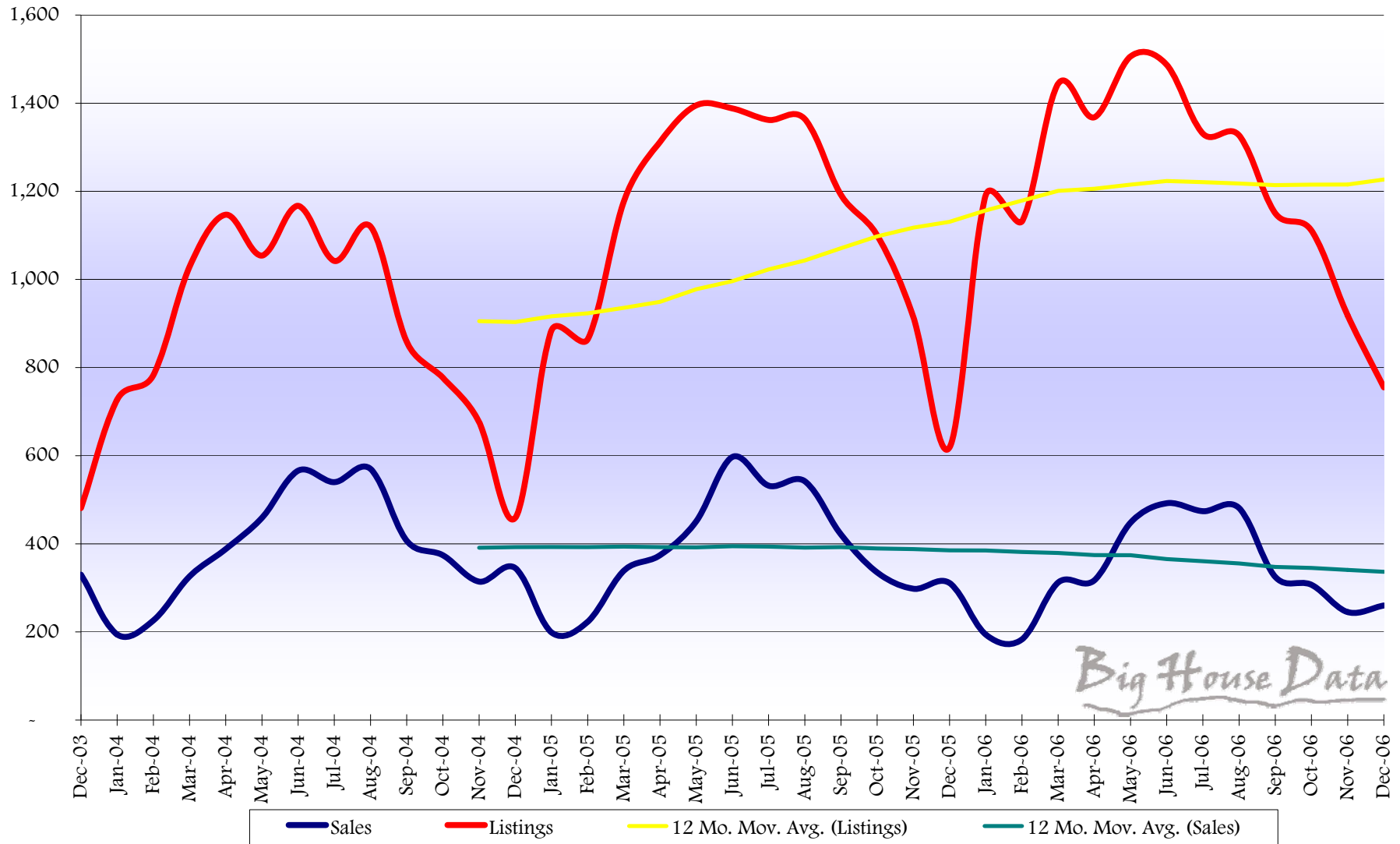


Big House Data

Washtenaw County 12 Month Listing and Sales Units

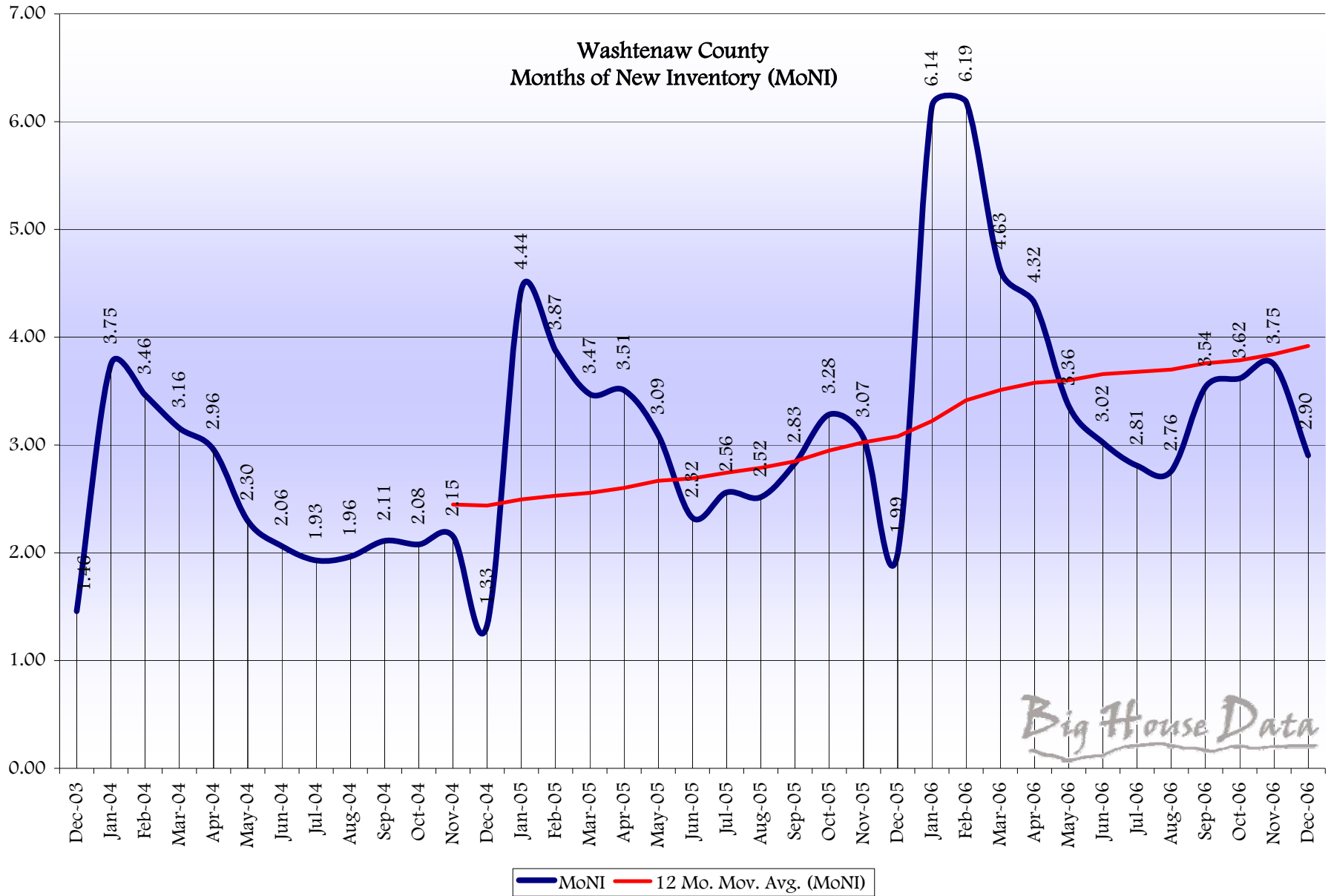


Washtenaw County 3 Year Listing & Sales Units



Big House Data

Washtenaw County Months of New Inventory (MoNI)



Washtenaw County Housing Market								
2005 Y-T-D Compared to 2006 Y-T-D								
2005	Avg LP	Avg SP	Avg LP/Avg SP	Avg DOM	Monthly Volume	# of Closings	# Listings	MONI
Jan-05	259,395	252,459	97.33%	72	48,360,403	199	884	4.44
Feb-05	275,039	265,565	96.56%	93	56,127,293	223	864	3.87
Mar-05	264,538	257,464	97.33%	100	83,628,678	339	1,177	3.47
Apr-05	253,567	253,850	100.11%	72	89,132,155	374	1,312	3.51
May-05	257,829	247,341	95.93%	70	105,847,590	451	1,395	3.09
Jun-05	302,051	294,134	97.38%	72	163,896,766	597	1,388	2.32
Jul-05	274,833	272,946	99.31%	73	135,423,922	532	1,362	2.56
Aug-05	284,227	274,761	96.67%	73	143,140,331	542	1,364	2.52
Sep-05	254,279	253,461	99.68%	70	101,351,881	421	1,192	2.83
Oct-05	276,121	275,602	99.81%	85	86,961,482	335	1,100	3.28
Nov-05	282,282	272,277	96.46%	87	77,651,821	298	914	3.07
Dec-05	259,524	255,764	98.55%	79	73,370,289	311	619	1.99
Y-T-D	270,307	264,635	97.93%	79	1,164,892,611	4,622	13,571	3.08
2006	Avg LP	Avg SP	Avg LP/Avg SP	Avg DOM	Monthly Volume	# of Closings	# Listings	MONI
Jan-06	269,822	257,316	95.37%	91	47,710,888	194	1,191	6.14
Feb-06	247,567	252,652	102.05%	92	59,827,177	183	1,132	6.19
Mar-06	254,789	237,780	93.32%	90	70,728,815	312	1,444	4.63
Apr-06	275,860	265,917	96.40%	87	79,127,308	317	1,368	4.32
May-06	278,137	270,797	97.36%	77	113,084,686	448	1,506	3.36
Jun-06	307,799	296,840	96.44%	73	137,077,936	492	1,487	3.02
Jul-06	268,140	260,434	97.13%	98	113,864,344	474	1,331	2.81
Aug-06	274,653	262,916	95.73%	83	117,710,308	481	1,327	2.76
Sep-06	275,305	256,423	93.14%	85	77,953,152	325	1,150	3.54
Oct-06	247,493	237,069	95.79%	111	69,235,806	307	1,111	3.62
Nov-06	269,900	241,394	89.44%	87	56,977,519	245	918	3.75
Dec-06	240,100	231,108	96.25%	85	57,986,066	260	755	2.90
Y-T-D	267,464	255,887	95.70%	88	1,001,284,005	4,038	14,720	3.92
Y-T-D Difference	Avg LP	Avg SP	Avg LP/Avg SP	Avg DOM	Monthly Volume	# of Closings	# Listings	MONI
Jan	4.02%	1.92%	-2.01%	27.27%	-1.34%	-2.51%	34.73%	38.20%
Feb	-9.99%	-4.86%	5.69%	-1.08%	6.59%	-17.94%	31.02%	59.66%
Mar	-3.69%	-7.65%	-4.11%	-10.50%	-15.43%	-7.96%	22.68%	33.30%
Apr	8.79%	4.75%	-3.71%	20.14%	-11.22%	-15.24%	4.27%	23.02%
May	7.88%	9.48%	1.49%	10.00%	6.84%	-0.67%	7.96%	8.68%
Jun	1.90%	0.92%	-0.96%	1.40%	-16.36%	-17.59%	7.13%	30.00%
Jul	-2.44%	-4.58%	-2.20%	34.48%	-15.92%	-10.90%	-2.28%	9.68%
Aug	-3.37%	-4.31%	-0.98%	14.48%	-17.77%	-11.25%	-2.71%	9.63%
Sep	8.27%	1.17%	-6.56%	20.71%	-23.09%	-22.80%	-3.52%	24.97%
Oct	-10.37%	-13.98%	-4.03%	30.77%	-20.38%	-8.36%	1.00%	10.21%
Nov	-4.39%	-11.34%	-7.28%	0.00%	-26.62%	-17.79%	0.44%	22.16%
Dec	-7.48%	-9.64%	-2.33%	6.96%	-20.97%	-16.40%	21.97%	45.90%
2006 v. 2005	-1.05%	-3.31%	-2.27%	11.88%	-14.04%	-12.64%	8.47%	27.23%

Big House Data